

Case for Support



CATHOLIC CAMPUS MINISTRY
WILLIAM & MARY



"CCM has really become part of what I think of as my family at William & Mary. There is no other organization I am part of here that **welcomes, supports,** and **encourages** me like CCM does. I am incredibly thankful for all the relationships I've had the chance to build and the opportunities I've had the chance to take with CCM over the last few years."

- Matt Rutkowski, '21

Why Catholic Campus Ministry?

THE NEED

Catholic young adults are leaving the Church in greater numbers, and at a faster rate than ever before in history. In fact, only 30% of those who were raised Catholic are still practicing today. And of those who leave the Catholic faith, 80% do so by age 23. A recent study by the Pew Foundation found that the fastest growing religious demographic in the United States today is "unaffiliated."

The statistics are sobering, but **there is hope.**

THE CALL

The mission of Catholic Campus Ministry is to make God known on William & Mary's campus, guided, inspired, and directed by the teachings of Christ and the Catholic Church.

Our world needs men and women, who have been transformed by the Gospel, to step out in boldness and faith. CCM invites students into a deepening relationship with Christ and the Church, forms them in Christian discipleship, and equips them for lifelong Catholic mission.

An investment in Catholic Campus Ministry is an investment in the future of the Church.

CATHOLICS AT WILLIAM & MARY

Of the nearly 6,000 undergraduate students at William & Mary...

- 17% self-identify as Catholic
- Of these nearly 1,000 Catholics...
 - **225** attend Sunday Mass weekly
 - **75** participate in at least one weekly ministry program
 - **55** serve in a leadership role
 - **25** attend daily Mass



Our Approach to Ministry

BELONGING | DISCIPLESHIP | LEADERSHIP



BELONGING

"Those who come here, belong here," reads the 1949 Student Handbook of the College of William & Mary. At the heart of this "first tradition of belonging" that is held so dear at William & Mary, is an even deeper reality. For at the deepest level of the human experience is a universal desire for communion – the desire to know, and to be known by another.

In our ministry at William & Mary, our first task is to form a community in which that desire is satisfied – a space where students are free to be themselves, knowing that they will be received and loved as they are. A place where they truly belong. **Students are hungry for deep, authentic friendships: friendships that go beyond the surface, where they are challenged and encouraged to become the men and women God is calling them to be.**

"Walking onto William & Mary's campus last fall, I was far from home. I didn't know anyone, and I felt as though I would never find my place. It wasn't until I walked through the doors at CCM that I finally felt **welcomed, supported, and most importantly, loved.** CCM has led me further toward Christ in more ways than I ever thought possible, and has provided a home for me when I needed it most."

–Elli Davis, 2023

DISCIPLESHIP

A disciple is one who has heard the message of Christ and made a choice to follow Him. Discipleship cannot be stumbled into, inherited, or entered into halfheartedly. It is an intentional, lifelong process of being conformed more and more to Christ.

As we meet students where they are, and as they are, our essential call is to introduce students to Christ, and to invite them into an ever-deepening relationship with Him. **CCM walks alongside students in this relationship, helping to facilitate special moments of encounter and daily habits of discipleship.**



LEADERSHIP

Our world is desperate for leaders who are men and women of integrity, virtue, and faith. College is a time when students are asking the big questions in life – they are discerning their vocations, discovering their gifts, and charting their course for the future. CCM is walking with them in the midst of this, sharing the wisdom of our Catholic faith.

Forming students in Christian leadership is at the heart of CCM's ministry model. Students are not passive consumers of ministry, but active participants in crafting a vision and bringing that vision forth. **Students emerge from CCM as leaders in their communities: they go on to become our priests, lay ministers, mothers, fathers, teachers, doctors, and business leaders.**





SACRAMENTAL LIFE

CCM FEEDS the soul. CCM's full-time Chaplain is dedicated to the needs of students and the campus community. The Sacraments are the core of our ministry, and everything else we do flows from them. *Our program includes: three Sunday Masses, daily Masses in the Shrine of Our Lady of Walsingham and Wren Chapel, Reconciliation twice a week and by appointment, RCIA*

SPIRITUALITY & EVANGELIZATION

CCM INVITES students to encounter Jesus and to share the joy of that relationship with everyone. *Our program includes: Small Group Bible Studies, semi-perpetual Adoration of the Blessed Sacrament, Rosary, Spiritual Direction, Vocational Discernment Groups, Retreats, Campus Outreach, Pilgrimages*

COMMUNITY & FELLOWSHIP

CCM GIVES students a place to feel at home, meet friends and allow their authentic Catholic identity to grow. We show students that they are loved, above all. *Our program includes: Freshman Move-In, Sunday Suppers, Block Party, Beach Trips, Family Weekend & Homecoming Festivities, Football Tailgates, Holiday Parties, Intramural Sports*

INTELLECTUAL EXPLORATION OF THE FAITH

CCM NURTURES the intellectual curiosity of students by offering catechetical programming that is engaging and challenging. CCM grows the whole person and teaches students how to find, define and defend their Catholic faith. *Our program includes: Tribe Catholic Lecture Series, Catholicism 101*

LEADERSHIP DEVELOPMENT

CCM EQUIPS servant leaders as they explore their faith as young adults. *Our program includes: 10-member student leadership board, 60 student coordinators, opportunities to learn and grow through participation in Evangelization Training Camps, Student Leadership Summit, Diocese of Richmond's Catholic Campus Ministry Summit*

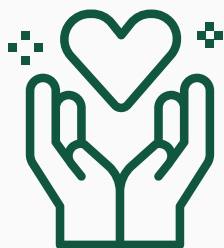
SERVICE & SOCIAL JUSTICE

CCM EMPOWERS students to affect positive change at every level – campus, local, state, regional, international. *Our program includes: Constructing homes in Appalachia, Pro-Life Ministry, Inner-city work in Richmond VA and Savannah GA, FISH food pantry, Local Homeless Shelters*

ECUMENISM & INTERFAITH

CCM ENCOURAGES students to partner with other faith communities to foster mutual respect and a deeper understanding of a shared experience of God. *Our program includes: Covenant with Canterbury, Bacon with the Baptists, CCM & Wesley Hangout, InterVarsity Pancake House, Communal Christian Dinner, Good Friday Stations of the Cross, Dinner with Muslim Student Association*

Ways to Support Catholic Campus Ministry



ANNUAL FUND OR ENDOWMENT?

Gifts made to Catholic Campus Ministry may be designated to the **Annual Fund** or to the **Endowment for Catholic Campus Ministry**. The Annual Fund provides for ongoing staffing, facilities, and program expenses of Campus Ministry. The Endowment for Catholic Campus Ministry is an investment fund, held by the William & Mary Foundation, which provides interest income that funds certain CCM programs.



LIVING FAITH SOCIETY

An electronic monthly donation drafted from your checking account or debit/credit card allows you to budget a donation over time, and provides a stable funding base for CCM. As a token of gratitude, members of the Living Faith Society receive various resources for daily use and spiritual growth.



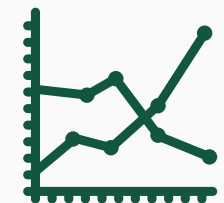
CORPORATE MATCHING GIFTS

Many employers offer charitable gift matching as an employee benefit, which often is as simple as sending a form to CCM along with your donation. For companies that use the **Benevity** platform for matching employee gifts, simply search "Catholic Campus Ministry at William & Mary" under causes.



IRA QUALIFIED CHARITABLE DISTRIBUTIONS

For those subject to required minimum distributions from IRA accounts, charitable gifts made directly from your IRA account may have significant tax advantages. Consult your financial advisor for advice specific to your situation.



STOCK AND OTHER ASSETS

CCM is often able to gratefully accept transfers of stock or other appreciated assets. Please contact CCM Development Director, John Hopke, at 757-220-1415 or jhopke@wmccm.org for specific instructions.



INCLUDE CCM IN YOUR LEGACY

A planned gift is a way to impact the lives of students at William & Mary for generations to come, through including CCM in your estate plans. In addition to bequests, various options such as Charitable Lead Trusts, Charitable Remainder Trusts, and other vehicles are available through the Catholic Community Foundation of the Diocese of Richmond. Please contact the CCM Development Director for further information.

Checks may be addressed and mailed to:

Catholic Campus Ministry at William & Mary

10 Harrison Avenue
Williamsburg, VA 23185

Give online or join the **Living Faith Society**:

tribecatholic.org/give



Catholic Campus Ministry at William & Mary

10 Harrison Avenue
Williamsburg, VA 23185
757.220.1415
tribecatholic.org